

BEWATEC.Parts

BEWATEC®


BEWATEC.WallArm 500 plus

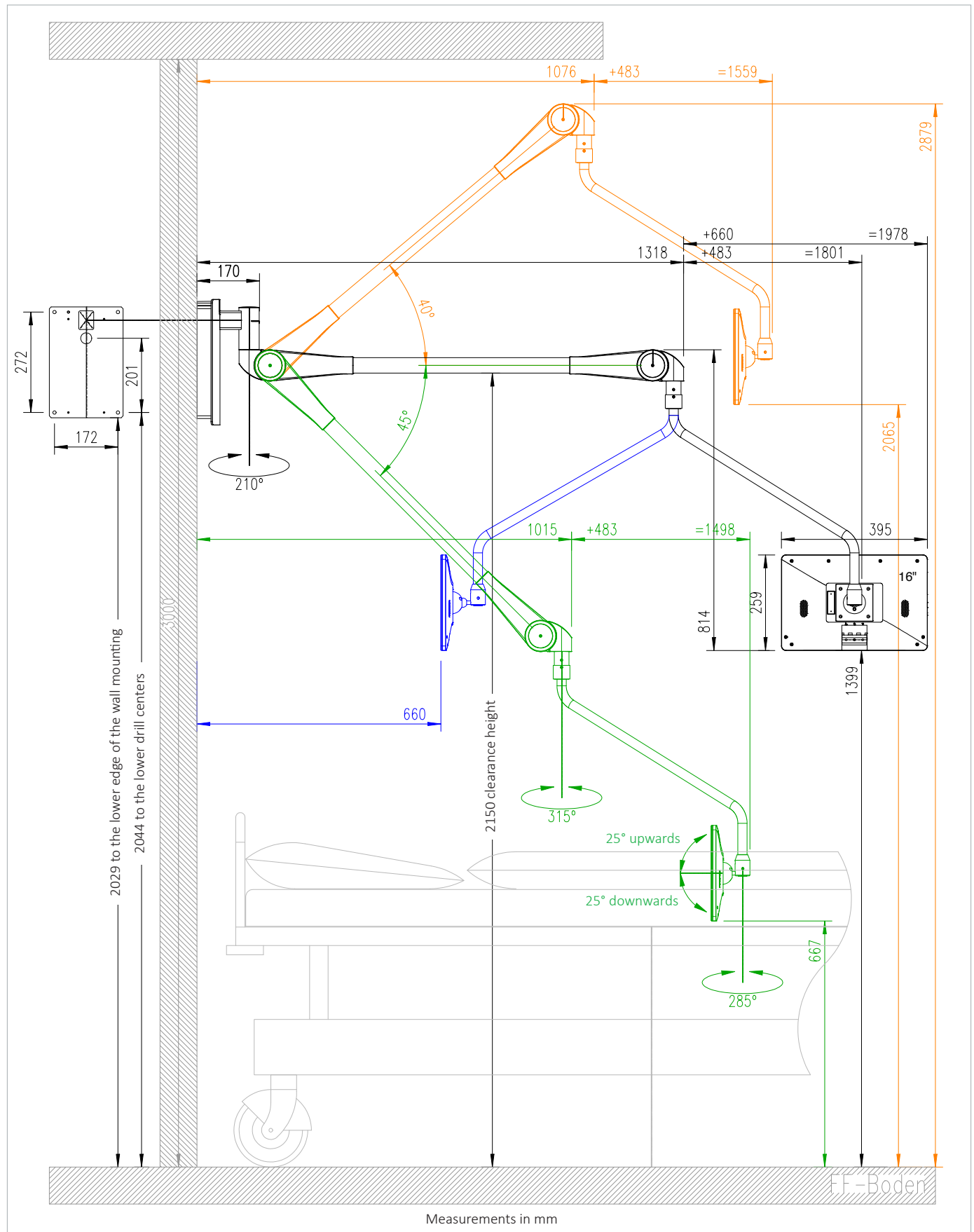
More patient comfort – directly at the Point of Care.



With its comfortable rotating joints and easy-to-clean surfaces, the BEWATEC.WallArm 500 plus offers maximum comfort at the patient's bedside. For special room conditions, the spring arm's rotation limits can be configured thanks to special rotation limitation bolts. The wall arm has a long life expectancy of 10 years and can be mounted on solid walls (concrete, masonry) as well as on lightweight walls (dry construction made of plasterboard or wood). Spring force and height stop can be adjusted quickly and easily. A special plus: Thanks to the minimal gap dimensions of the arm, there is little risk of pinching or injury.

BEWATEC.WallArm 500 plus

EXEMPLARY REPRESENTATION



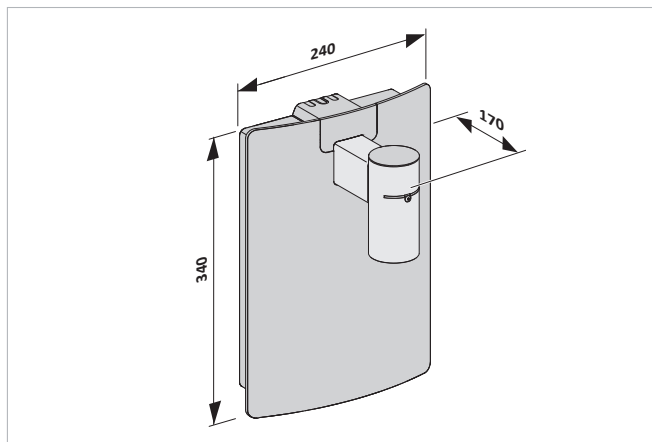
BEWATEC.WallArm 500 plus

BEWATEC.WALLARM 500 PLUS

Description	Wall bracket for a BEWATEC tablet
Load capacity on VESA plate (kg)	Min: 0,45 Max: 2,7
Connection cable	CAT.5 integrated Wall side: RJ45 plug Device side: RJ45 plug
Cable routing	In the wall arm through the mounting to the RJ45 connection socket
Monitor mount	VESA 75
Maximum delivery (mm)	1801 / 1076
Material & colour	Arm: metal, powder coated, pure white (RAL 9010) Covers: plastic, pure white (RAL 9010)

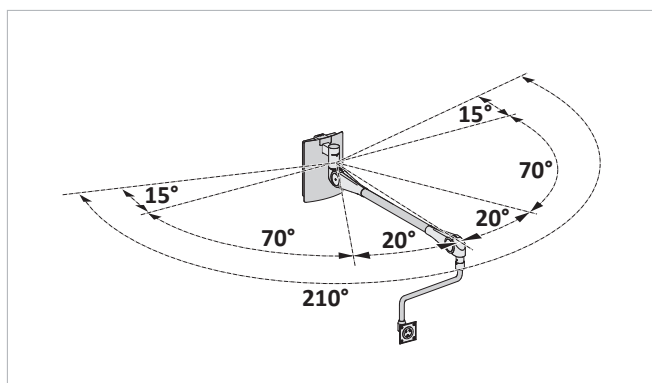
BEWATEC.WALLMOUNTING 500 PLUS

Description	Wall mounting for holding the BEWATEC.WallArm 500 plus
Dimensions W x H x D (mm)	240 x 340 x 169 (incl. plastic cover)
Material & colour	Wall mounting: metal Cover: plastic, white
Mounting cover	Magnetic mounting



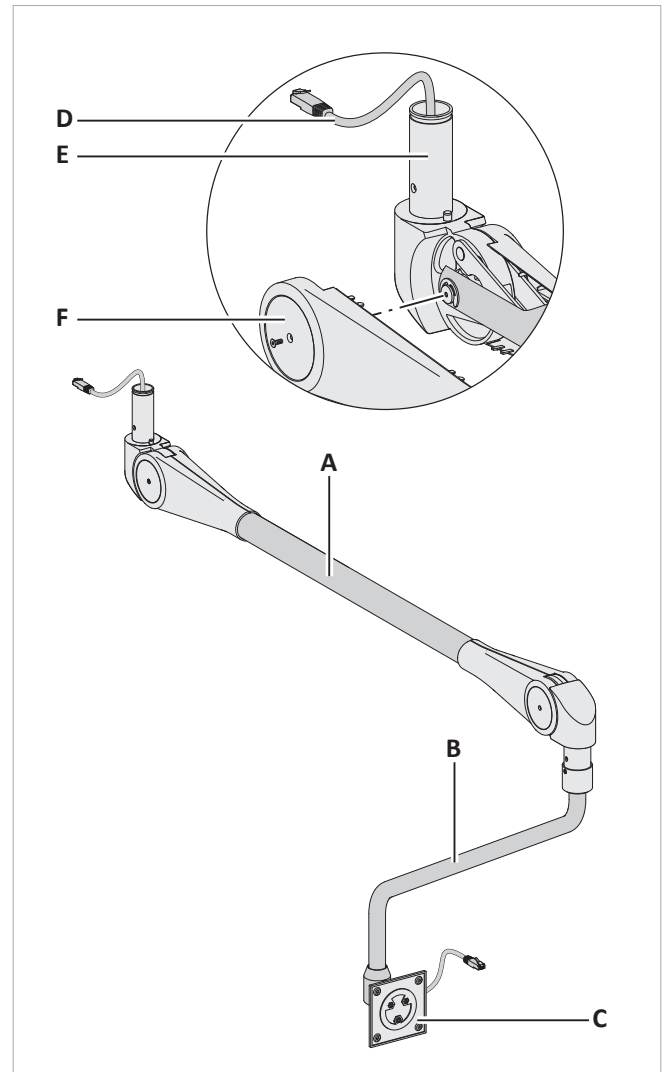
OPTIONAL ACCESSORIES

Rotation limitation bolts: With the bolts, rotation limitations of the spring arm of the BEWATEC.WallArm 500 plus can be configured for special room conditions. For this purpose, the rotation limitation bolts are screwed into the open bearing head of the wall mounting from below.



FUNCTIONAL ELEMENTS OF THE WALL ARM

- A Spring arm
- B Monitor arm
- C Monitor adapter (VESA-II)
- D Network connector (RJ45 CAT.5)
- E Stud
- F Joint cover



RECOMMENDED WALL TYPES

Solid walls
Lightweight walls

Concrete, masonry
Dry construction from wood or plasterboard (exclusively on professionally constructed and tested double planked plasterboard lightweight partition walls)



For Sales and Support please contact your local BEWATEC partner

Connexus Communications Limited
Unit D2
Baldonnell Business Park, Naas Road, Dublin 22,
D22 Y940
Ireland
T: 00 353 1 4105866, info@connexus.ie www.connexus.ie