



SYSTEVO BED UNITS

SYSTEVO BED UNITS

COMPATIBILITY

The Systevo bed units can be used in conjunction with the entire Systevo Call Ackermann portfolio. Thanks to data communication, messages are transmitted to the Systevo Touch IP in fractions of a second and pending alarms are processed. Of course, the bed units are compatible with all known electronic modules and room terminals from Honeywell, as well as the room terminal ZT99. The normative requirements of VDE 0834 / UL 1069 are fulfilled. Systevo bed units guarantee both smooth migration and use in future communication systems.

USABILITY

The well thought-out design simplifies the use of Systevo bed units by the care personnel. The styling and colours of the buttons and the connection sockets are simple and easy to understand. Systevo handsets are logged off at the touch of a button, e.g. to conduct cleaning.

ROBUSTNESS

When using Systevo handsets, the magnetic system socket ensures a monitored connection to the Systevo bed unit. The magnetic system socket ensures a stable mechanical fixation: if the defined tensile force on the handset cable is exceeded, it is disconnected from the bed unit to prevent damage.

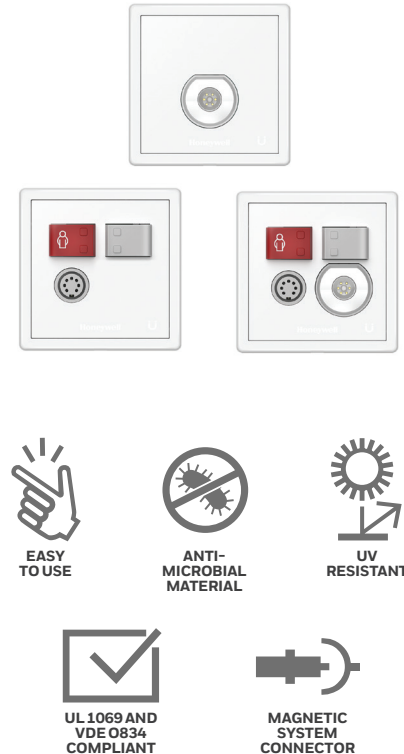
DURABILITY AND HYGIENE CHARACTERISTICS

The Systevo bed units were developed for the tough daily care routine and are characterised by a high degree of durability. The units are constructed of anti-microbial and UV-resistant material to help prevent the spread of bacteria and protect against potential fading or discoloration from UV rays.

EASY INSTALLATION

The use of colour-coded wiring terminals makes wiring and commissioning of the bed units extremely user-friendly. Fast address coding makes the units easy to commission and can be programmed in data communication mode.

Systevo Bed Unit	Socket Type: DIN 7	Socket Type: Magnetic Auto Release	Call Push Button	Cancel Push Button	Cover Plate	Control Outputs
73091A	Yes	Yes	Yes	Yes	88885A3	2
73091B	Yes	No	Yes	Yes	88885B3	2
73091E	No	Yes	No	No	88885F3	5
73091F	No	Yes	No	No	88885F3	2
Accessories	88914A5: Mounting frame single					
	88914B5: Mounting frame double					
	88914C5: Mounting frame triple					



TECHNICAL DETAILS

Operating Voltage: 24 Vdc $\pm 10\%$

Current Consumption: 10 mA to 40 mA

Contact Load (light and control outputs):
Max. 250 mA/24 Vac/dc

Versions:

Compatibility mode: For normally closed circuit systems

Databus mode: in conjunction with Systevo Touch IP

Approvals: CE, VDE 0834, UL 1069

Operating Temperature: +5°C to +55°C

Type of Protection: IP20

Material (Cover Plates): PC+ABS-FR (antimicrobial, UV-resistant)

Colour (Cover Plates): White, similar to RAL 9003

Weight: Approx. 80 g to 90 g (depending on model)

Sockets: Designed for approved devices only

Dimensions (H x W x D):

Bed Units: 71 mm x 71 mm x 31.6 mm

Cover Plates: 68 mm x 68 mm x 5 mm

Frames: 81 mm x 81/152/223 mm

Honeywell Safety and Productivity Solutions
Intelligent Life Care

Novar GmbH
Forumstrasse 30, 41468 Neuss, Germany
+49 2131 40615-600
www.ackermann-clino.com/en
info@ackermann-clino.com



For sales and support please contact your local Honeywell partner:
Connexus Communications Ltd.
Unit D2, Baldonnell Business Park, Naas Road, Dublin 22. D22 Y940. Ireland
T: 00353 1 4105866 E: info@connexus.ie W: www.connexus.ie

Systevo Bed Units Sell Sheet | 4 | 06/20
© 2020 Honeywell International Inc.

**THE
FUTURE
IS
WHAT
WE
MAKE IT**

Honeywell